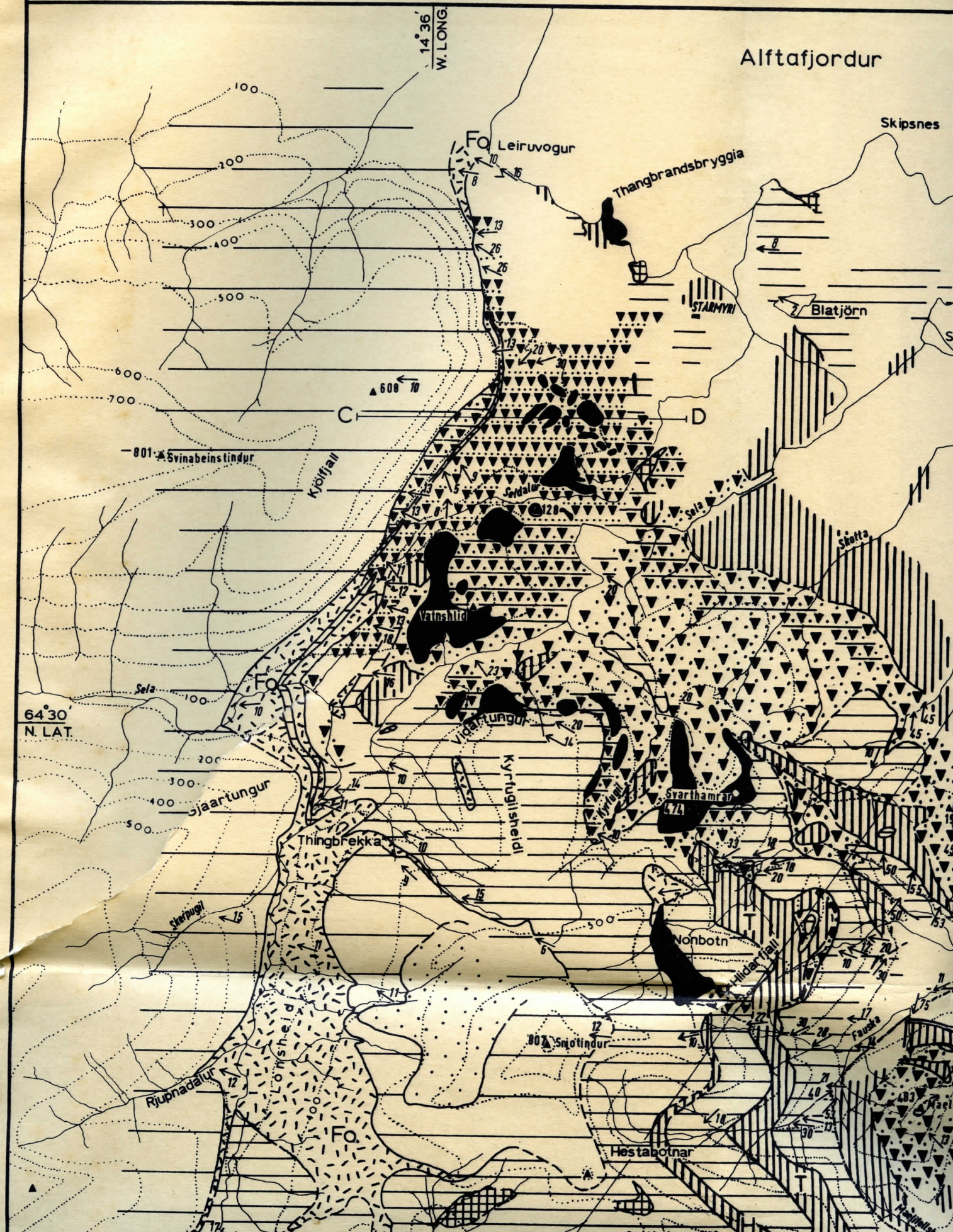
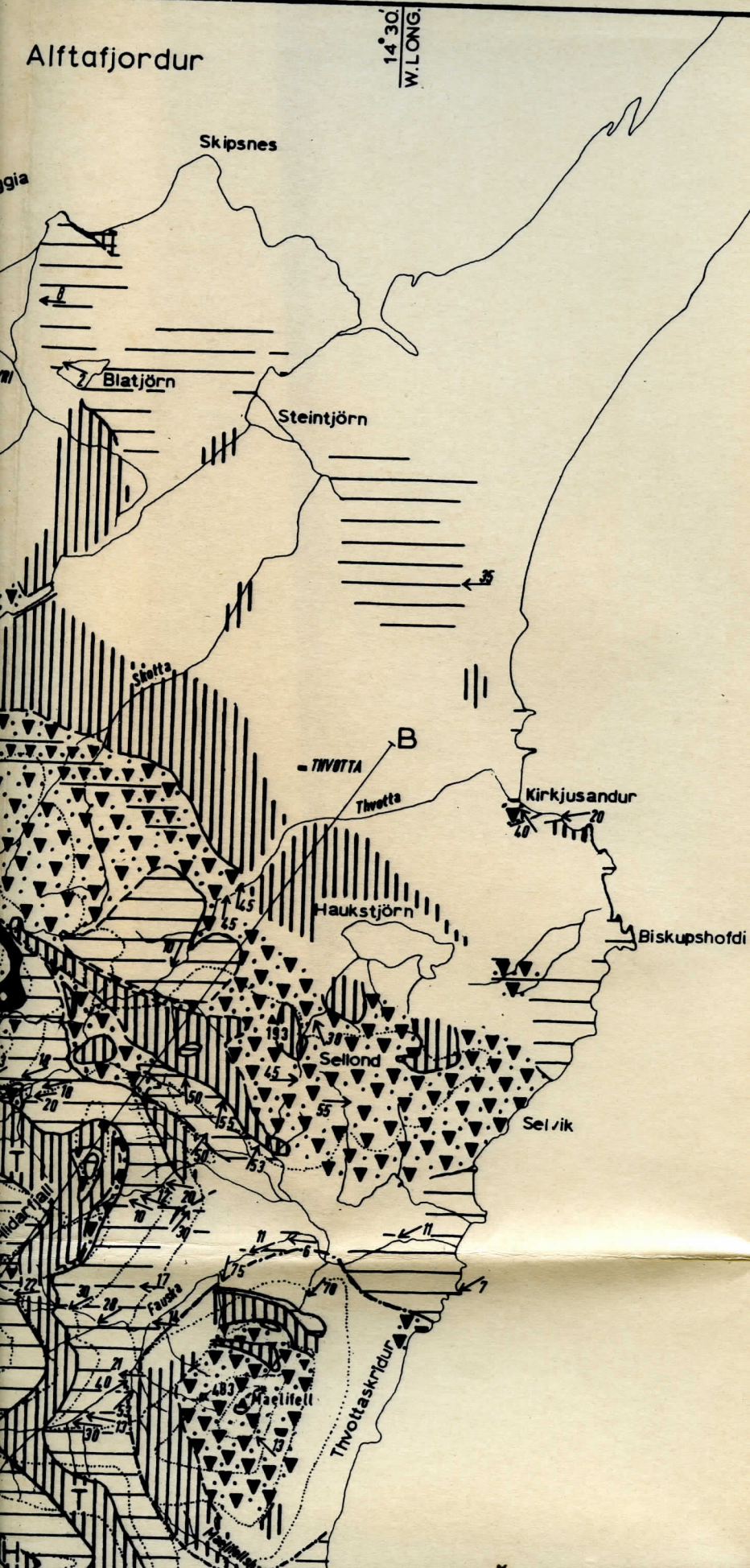


THE AUSTURH



JUSTURHORN AREA





64°25'
N. LAT.

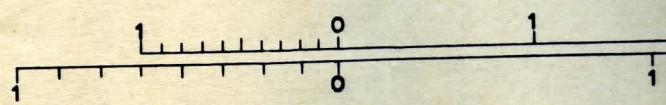
Lon

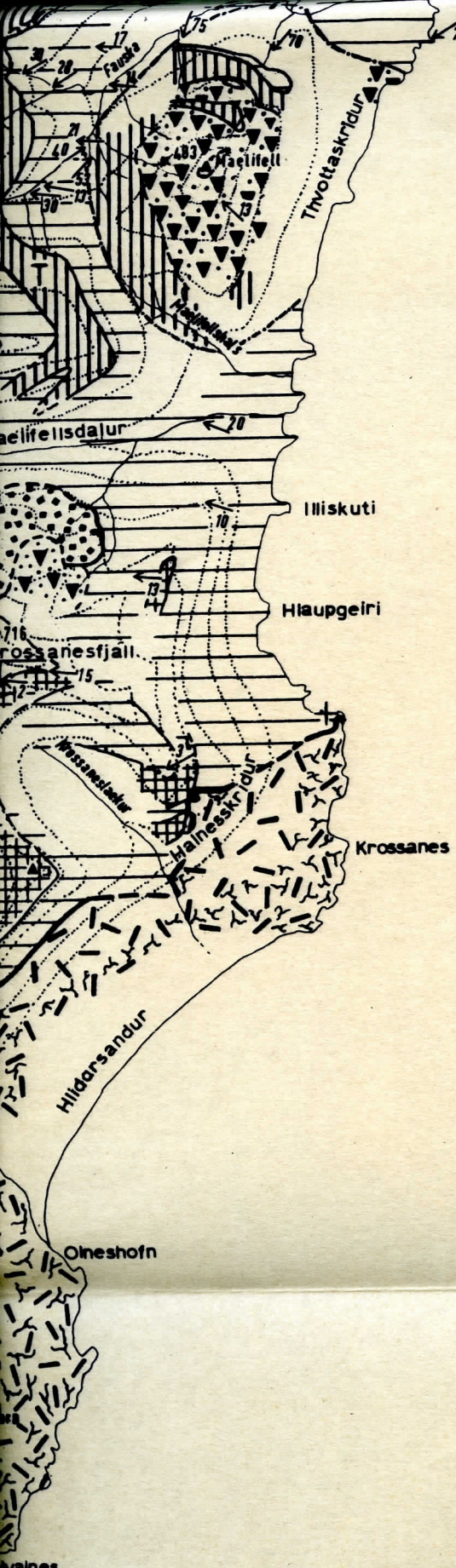
Graenanes

Olneshofn

Hvalnes

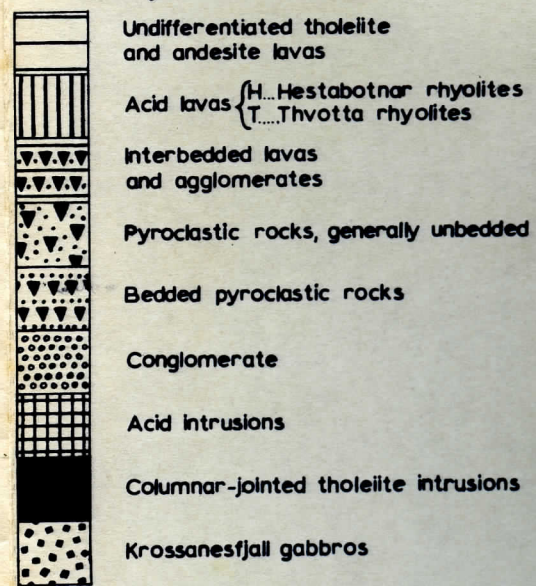
SCALE



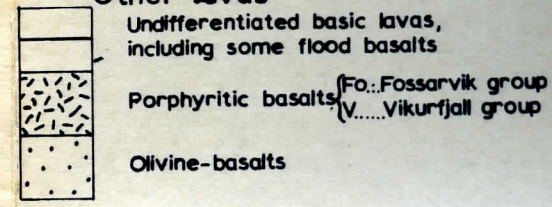


- HVALNES Farmhouse
- ↙ 9 Dip
- - - Fault
- ▲ 716 Summit altitude in metres
- Form-lines, at 100m. intervals

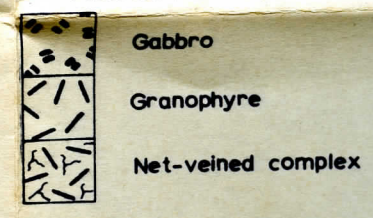
Alftafjordur volcano



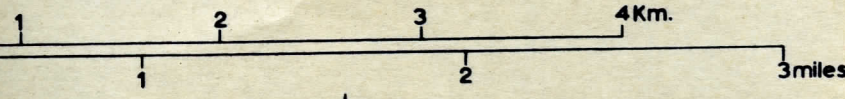
Other lavas



Austurhorn intrusion

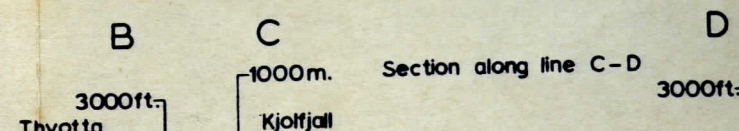


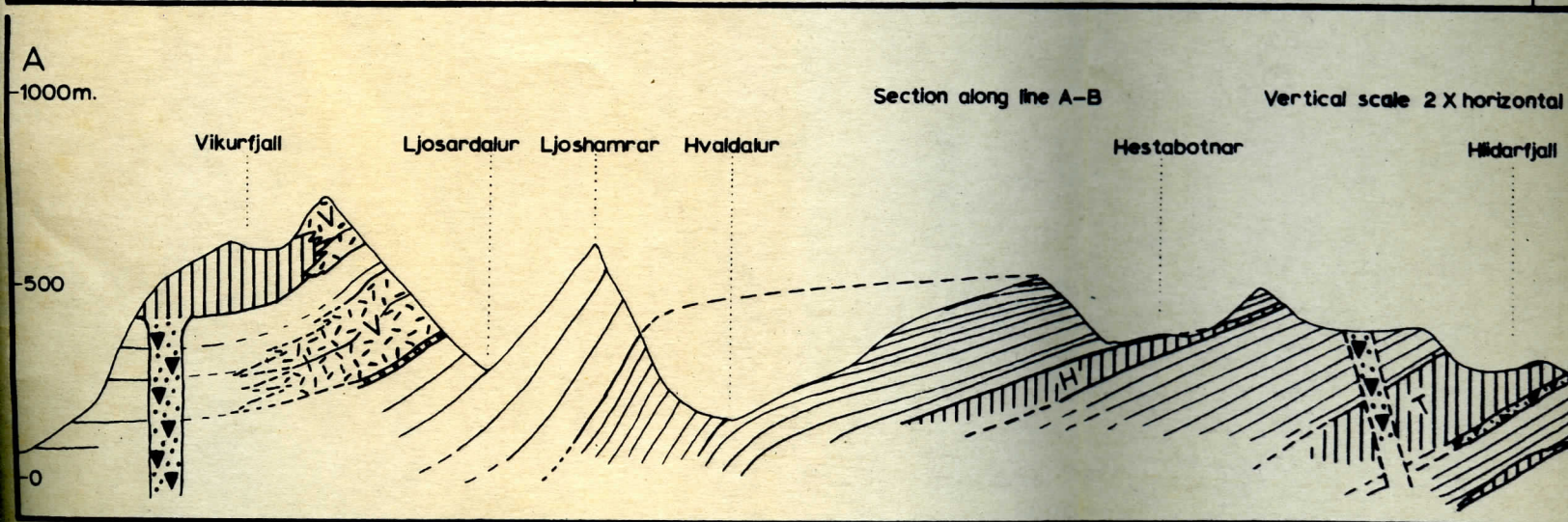
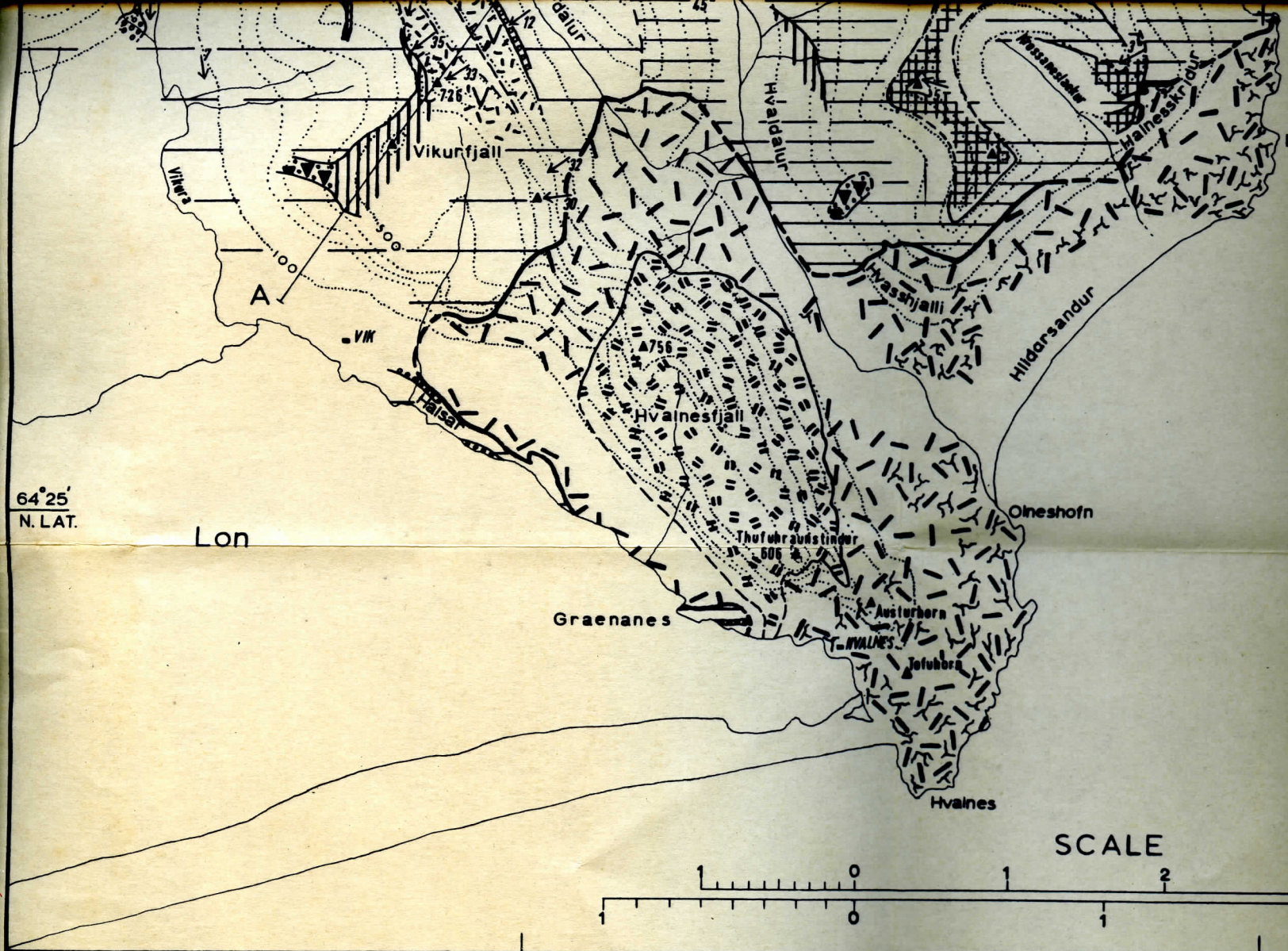
SCALE

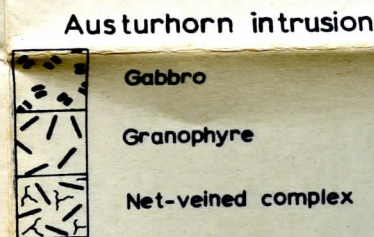
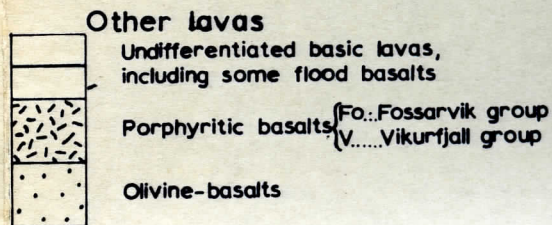
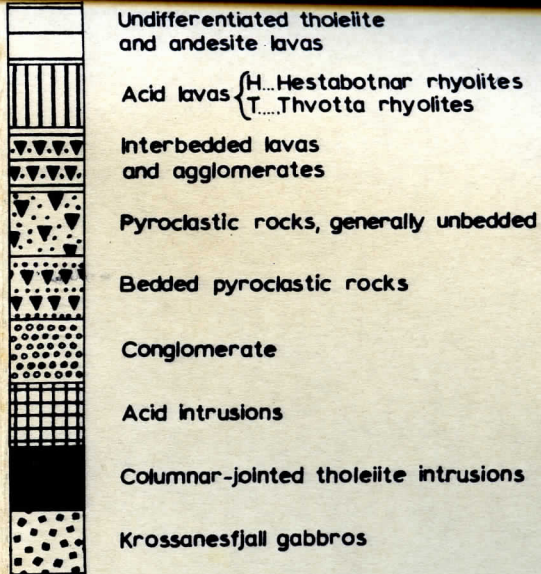


D. H. Blake, Ph. D. 1964
Geology

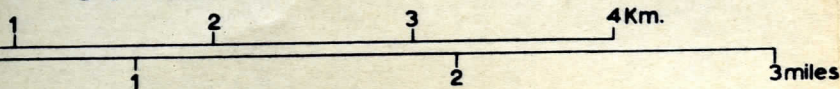
Vertical scale 2 X horizontal





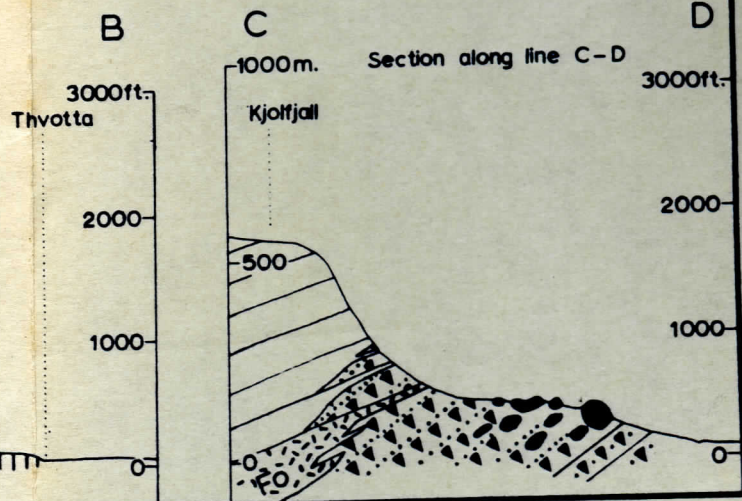
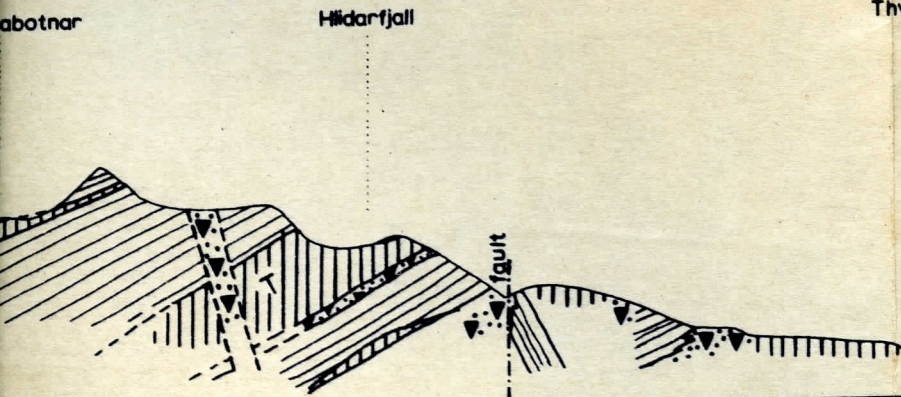


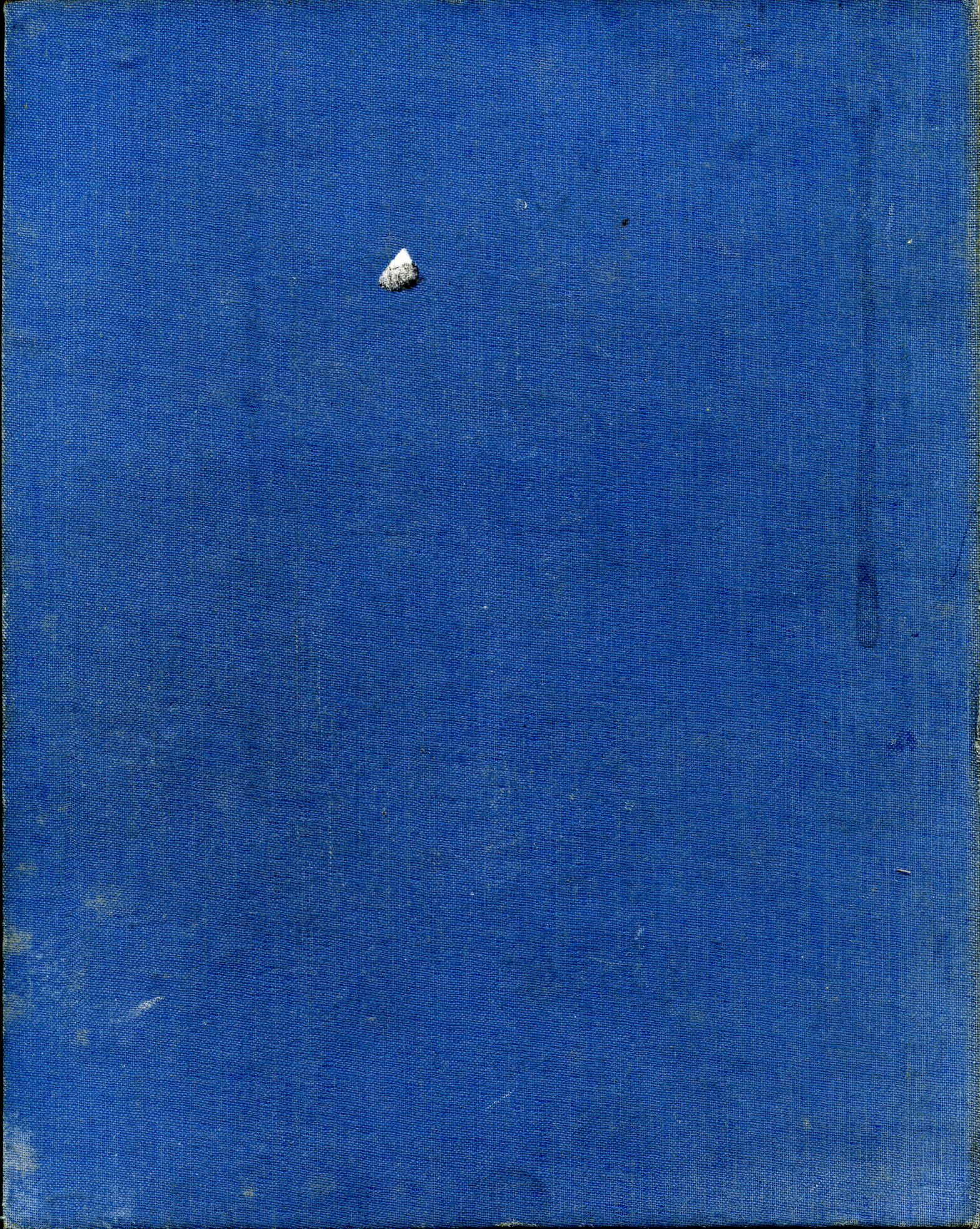
SCALE



D. H. Blake, Ph. D. 1964
Geology

Vertical scale 2 X horizontal





D. H. BLAKE

1964

PH.D.